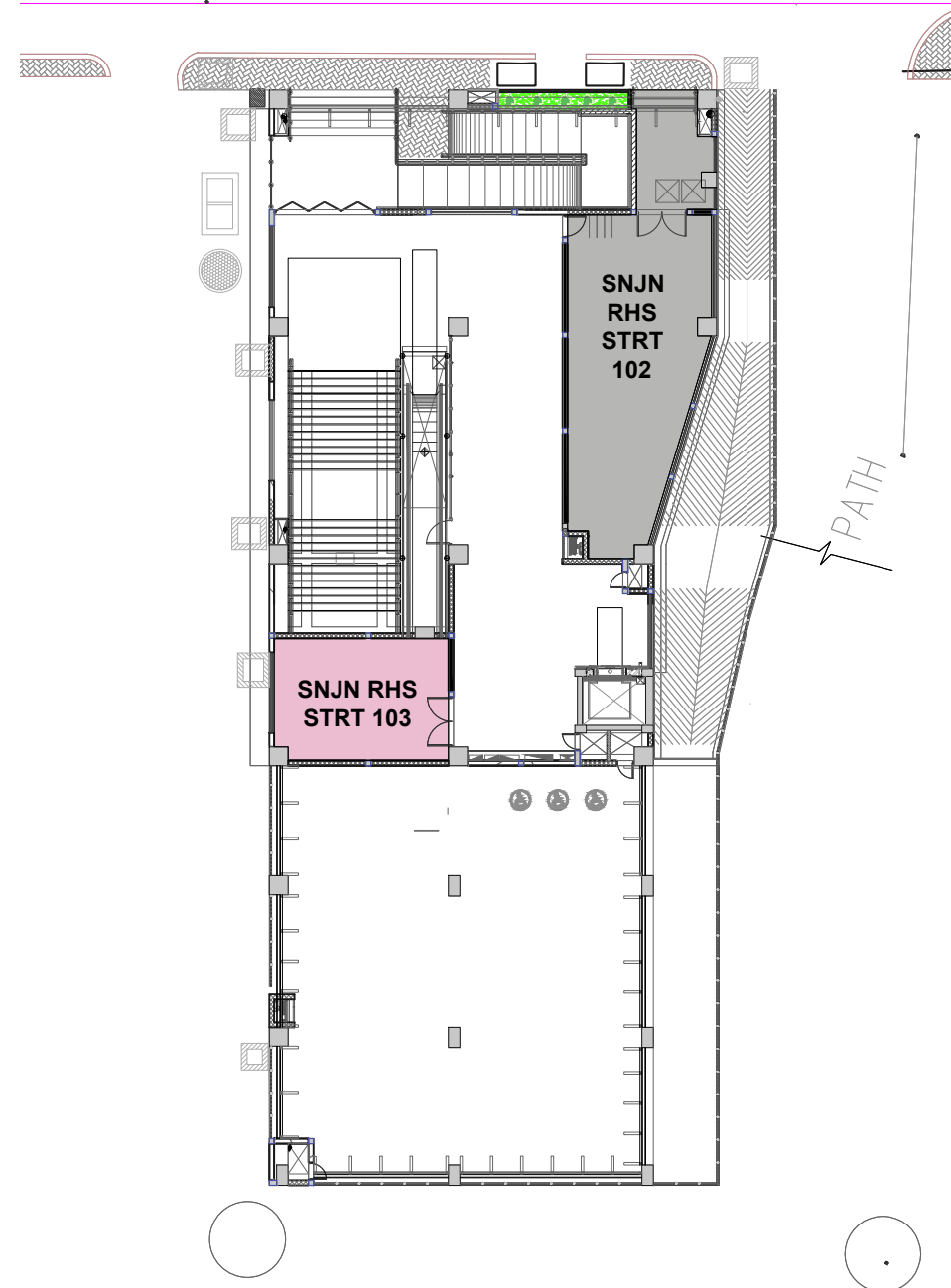
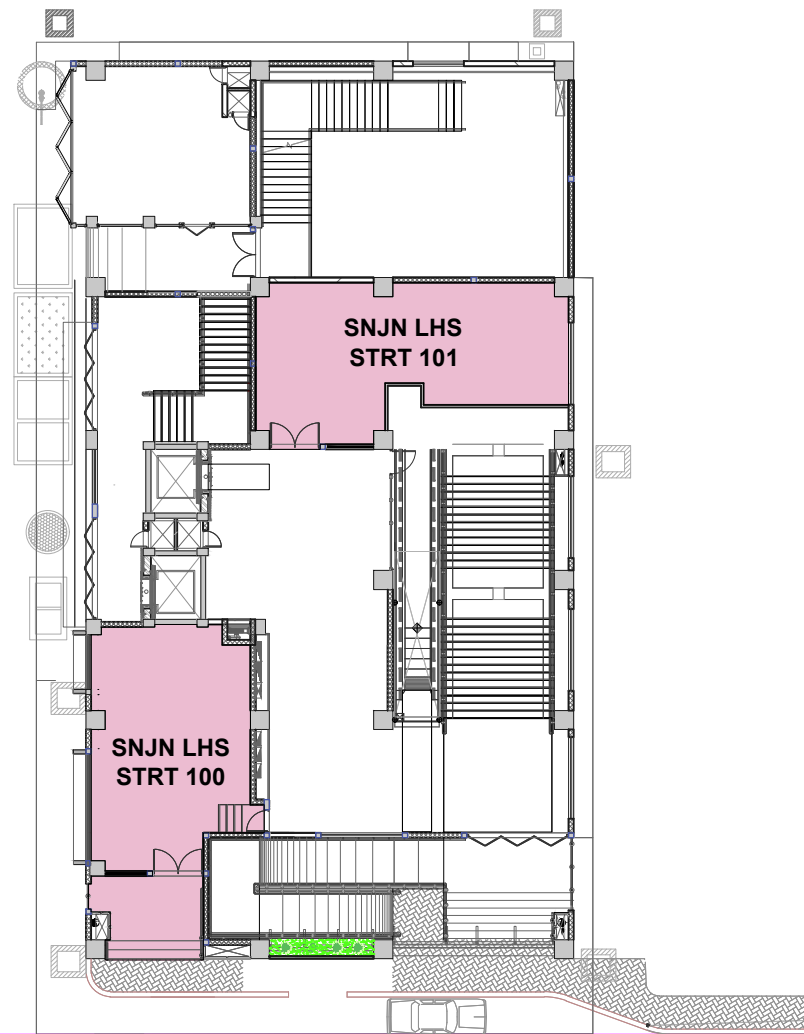


← TOWARDS PETTA

TOWARDS TRIPUNITHURA TERMINAL →



**OFFICE/ COMMERCIAL:**

| CODE              | AREA      |
|-------------------|-----------|
| SNJN LHS STRT 100 | 755 Sq.ft |
| SNJN LHS STRT 101 | 694 Sq.ft |
| SNJN RHS STRT 103 | 356 Sq.ft |

LHS ENTRY/ EXIT  
BUILDING

RHS ENTRY/ EXIT  
BUILDING

|  |                                    |
|--|------------------------------------|
|  | AVAILABLE KIOSK/ SHOP              |
|  | SOLD OUT KIOSK/ SHOP               |
|  | AVAILABLE OFFICE/ COMMERCIAL SPACE |
|  | SOLD OUT OFFICE/ COMMERCIAL SPACE  |

GENERAL NOTES:

ALL DIMENSIONS ARE IN MILLIMETERS.

**Kochi Metro Rail Limited,**  
( A joint venture company of Govt. of India & Govt. of Kerala )  
KMRL, 4th Floor,  
JLN Stadium Metro Station, Kaloor,  
Ernakulam. Pin: 682 017  
Phone : 0484-282 6700  
Fax : 0484-238 0686  
Email- contactus@kmrl.co.in



**KOCHI METRO RAIL LTD.**

TITLE :

**S N JUNCTION**

**STREET LEVEL**

Dwg.

FLOOR PLAN

| SHEET NO    | SHEET SIZE |
|-------------|------------|
| 01 of 01    | <b>A3</b>  |
| SCALE:      | 1 : 100    |
| DRAWN DATE: | 11.07.2022 |