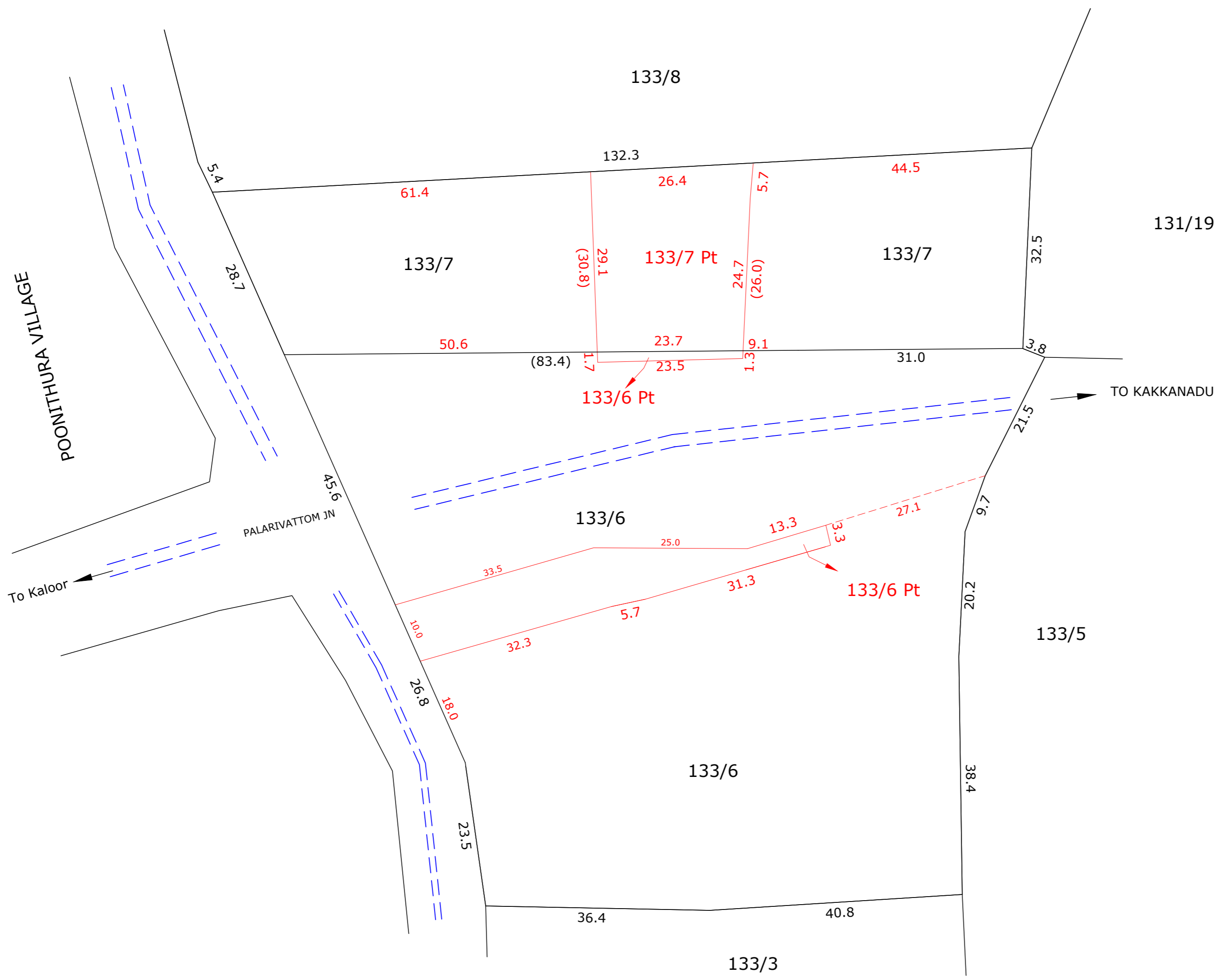
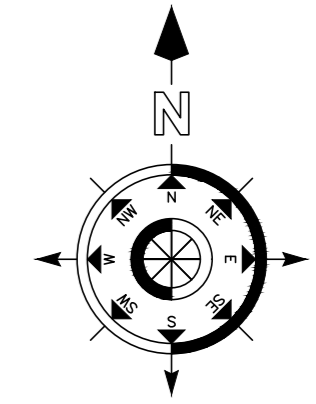


← TOWARDS JLN STADIUM

TOWARDS INFOPARK →



DISTRICT : ERNAKULAM
 TALUK : KANAYANNUR
 VILLAGE : EDAPPALLY SOUTH

L. H. S		
Survey No.	Approx. Extent (in Ha)	Remarks
133/6 Part	0.0035	L.A.
133/7 Part	0.0745	L.A.
TOTAL	0.0780	

R. H. S		
Survey No.	Approx. Extent (in Ha)	Remarks
133/6 Part	0.0090	L.A.

Kochi Metro Rail Limited,
 (A joint venture company of Govt. of India & Govt. of Kerala)
 KMRL, 4th Floor,
 JLN Stadium Metro Station, Kaloor,
 Ernakulam. Pin: 682 017
 Phone : 0484-282 6700
 Fax : 0484-238 0686
 Email- contactus@kmrl.co.in



KOCHI METRO RAIL PROJECT

PHASE II | JLN STADIUM - INFOPARK

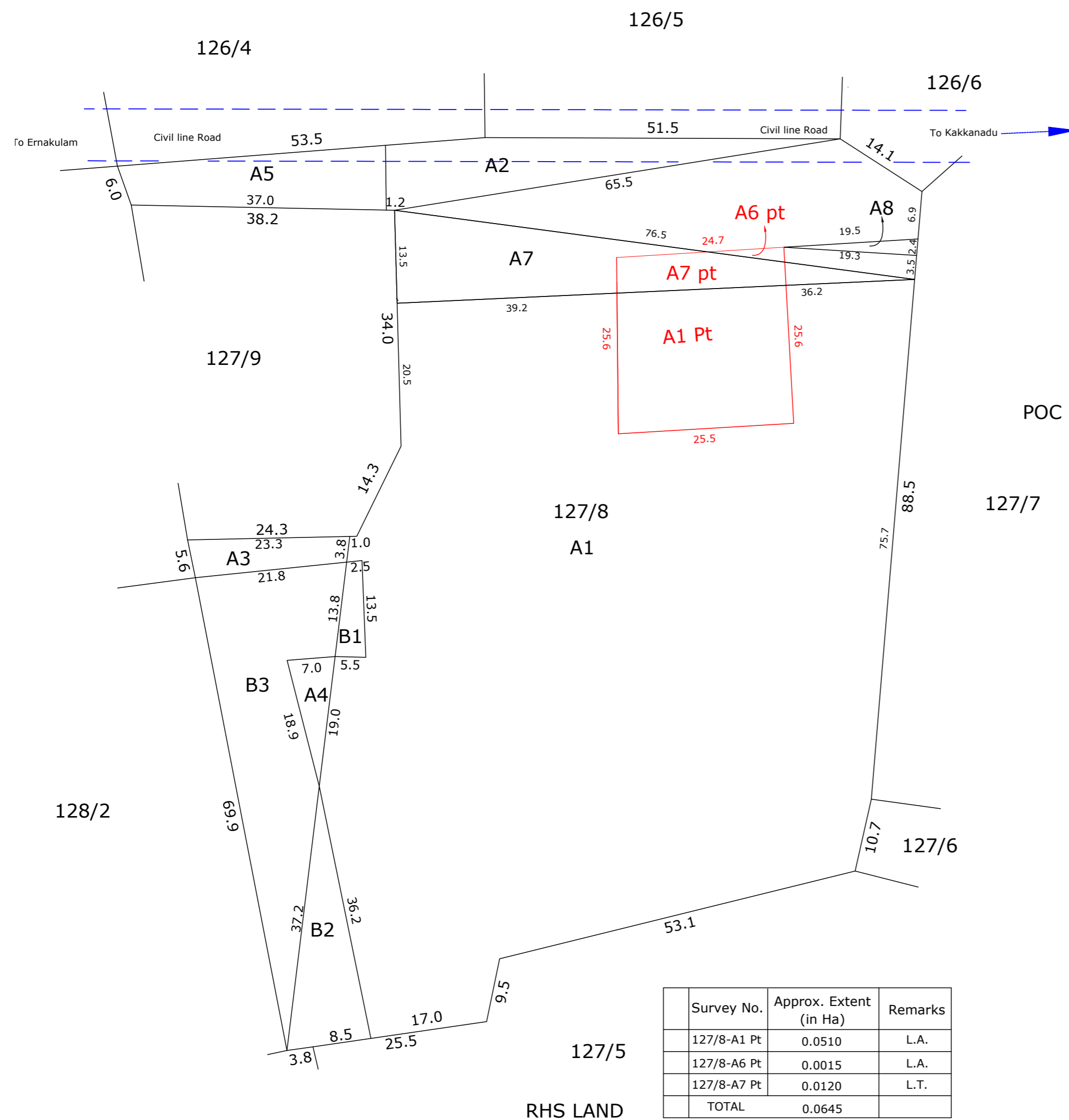
PALARIVATTOM JN. STATION

TITLE : LAND PLAN SCHEDULE

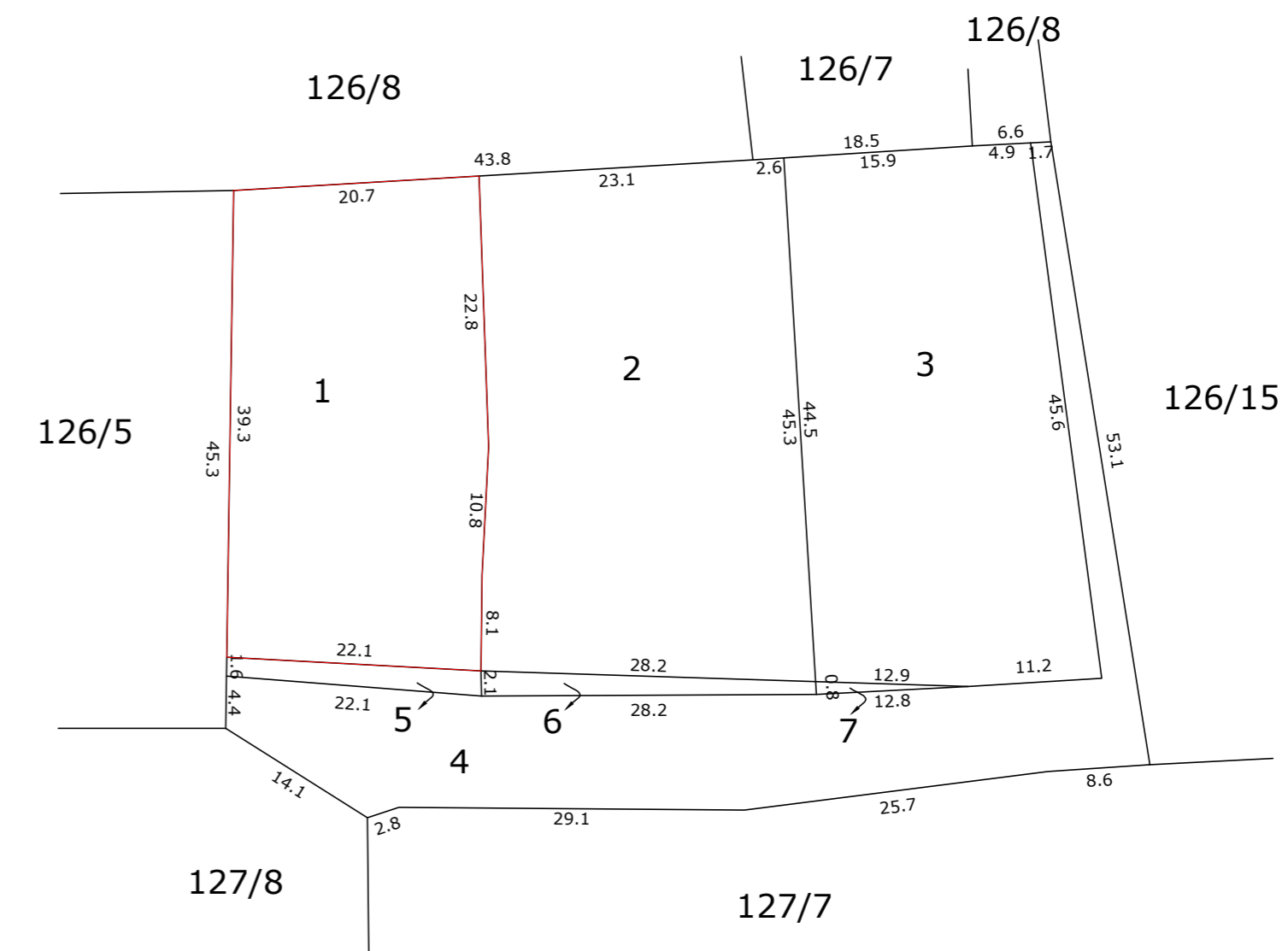
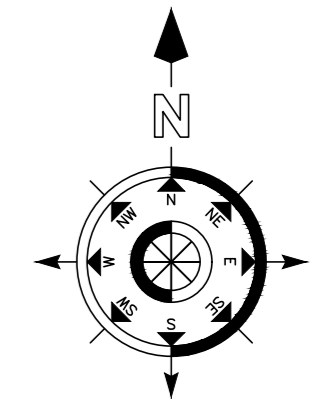
DRG NO : KMRL-PH2-CV-LP-002

TOWARDS JLN STADIUM ←

TOWARDS INFOPARK →



DISTRICT	: ERNAKULAM
TALUK	: KANAYANNUR
VILLAGE	: EDAPPALLY SOUTH



LHS LAND

Survey No.	Approx. Extent (in Ha)	Remarks
126/6-1	0.0865	L.A.

Survey No.	Approx. Extent (in Ha)	Remarks
127/8-A1 Pt	0.0510	L.A.
127/8-A6 Pt	0.0015	L.A.
127/8-A7 Pt	0.0120	L.T.
TOTAL	0.0645	

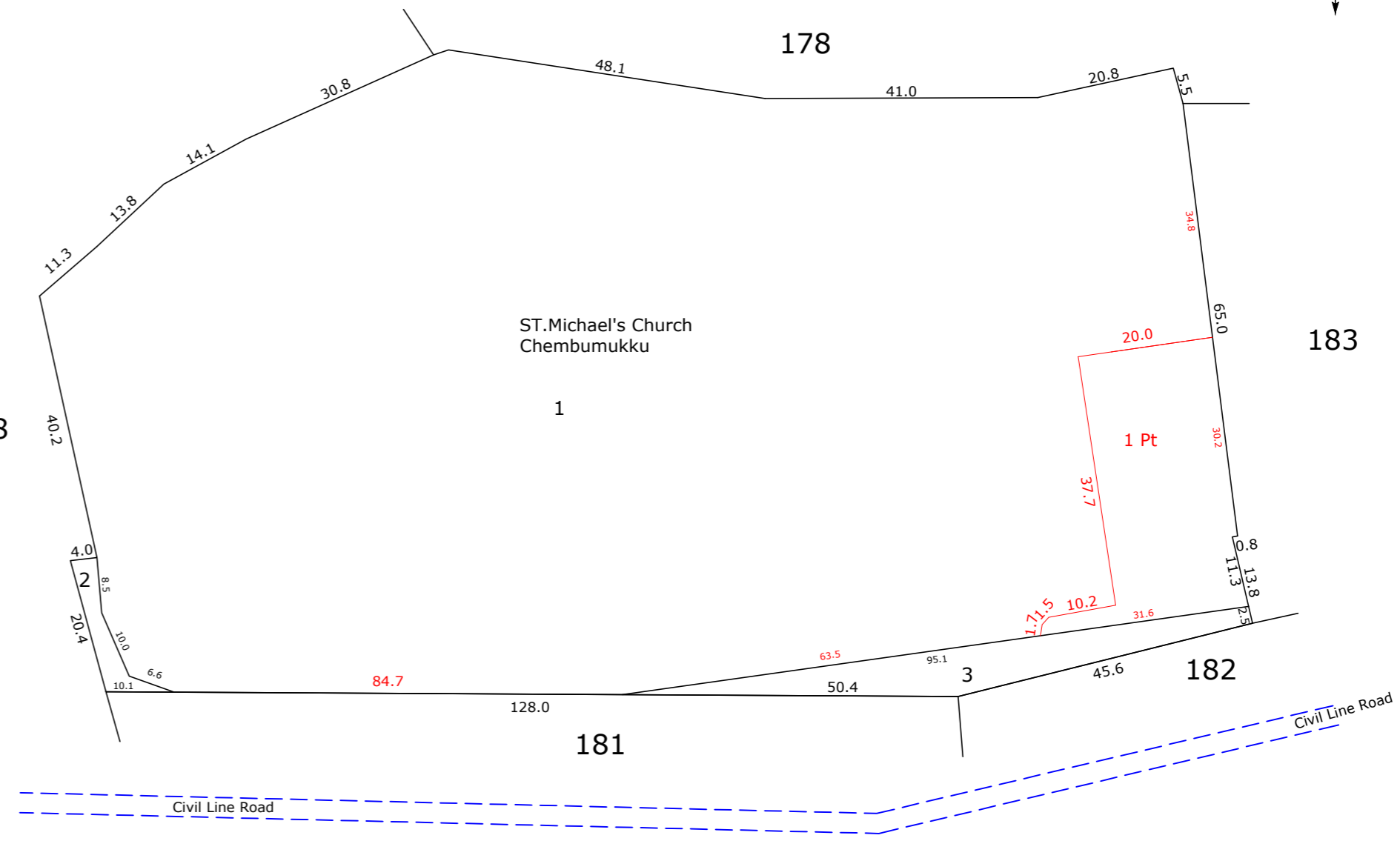
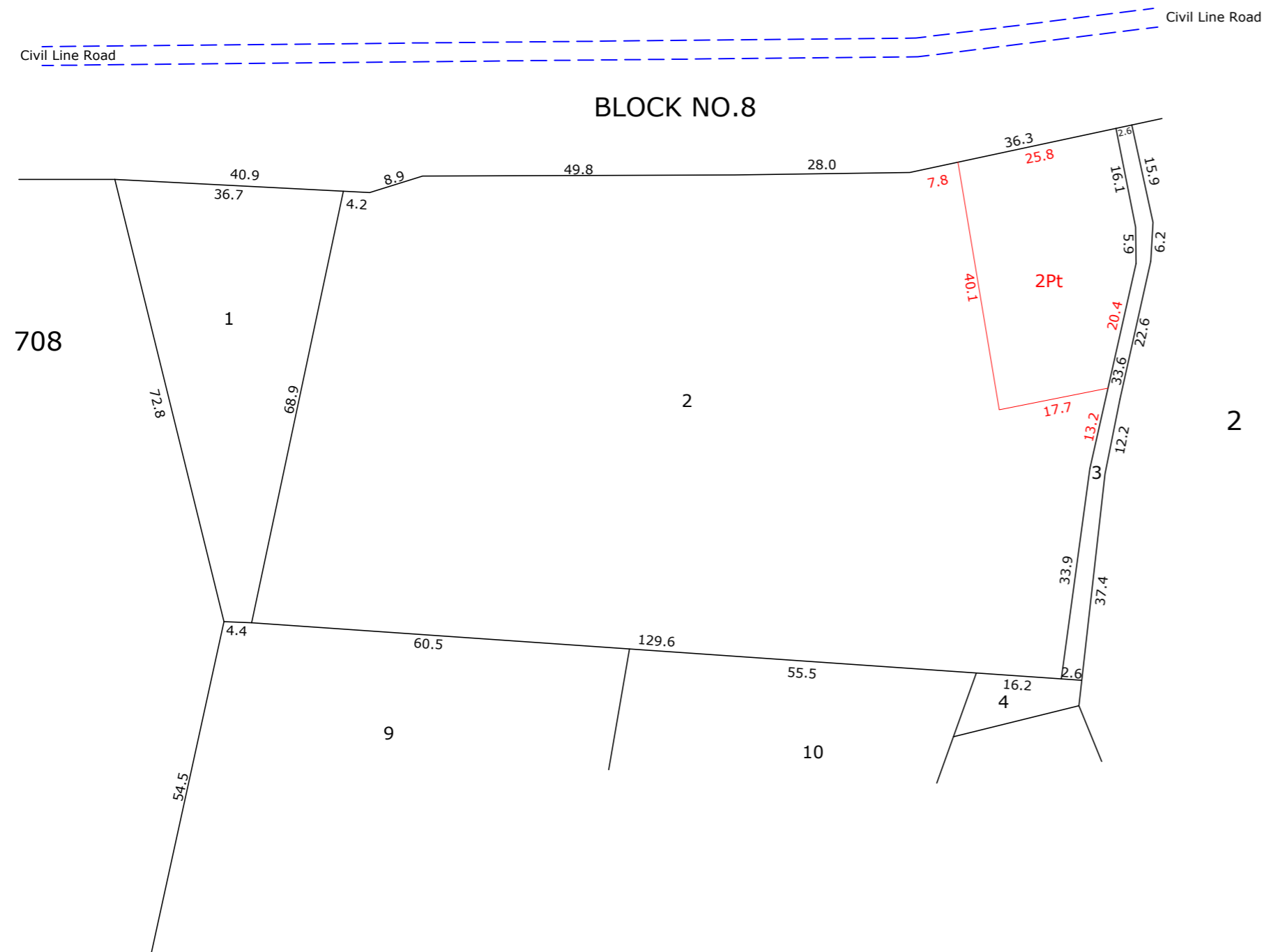
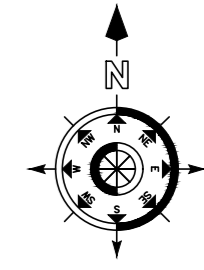
Kochi Metro Rail Limited,
 (A joint venture company of Govt. of India & Govt. of Kerala)
 KMRL, 4th Floor,
 JLN Stadium Metro Station, Kaloor,
 Ernakulam. Pin: 682 017
 Phone : 0484-282 6700
 Fax : 0484-238 0686
 Email- contactus@kmrl.co.in



KOCHI METRO RAIL PROJECT
PHASE II | JLN STADIUM - INFOPARK
PALARIVATTOM BYPASS STATION
TITLE : LAND PLAN SCHEDULE
 DRG NO : KMRL-PH2-CV-LP-003

← TOWARDS JLN STADIUM

TOWARDS INFOPARK →



RHS LAND

Re Survey No.	Approx. Extent (in Ha)	Remarks
1/2 Part	0.0965	L.A.

DISTRICT	: ERNAKULAM
TALUK	: KANAYANNUR
VILLAGE	: VAZHAKKALA
BLOCK NO.	: 9

LHS LAND

Re Survey No.	Approx. Extent (in Ha)	Remarks
180/1 Part	0.0840	L.A.

DISTRICT	: ERNAKULAM
TALUK	: KANAYANNUR
VILLAGE	: VAZHAKKALA
BLOCK NO.	: 8

Kochi Metro Rail Limited,
 (A joint venture company of Govt. of India & Govt. of Kerala)

 KMRL, 4th Floor,
 JLN Stadium Metro Station, Kaloor,
 Ernakulam. Pin: 682 017
 Phone : 0484-282 6700
 Fax : 0484-238 0686
 Email- contactus@kmrl.co.in



KOCHI METRO RAIL PROJECT

PHASE II | JLN STADIUM - INFOPARK

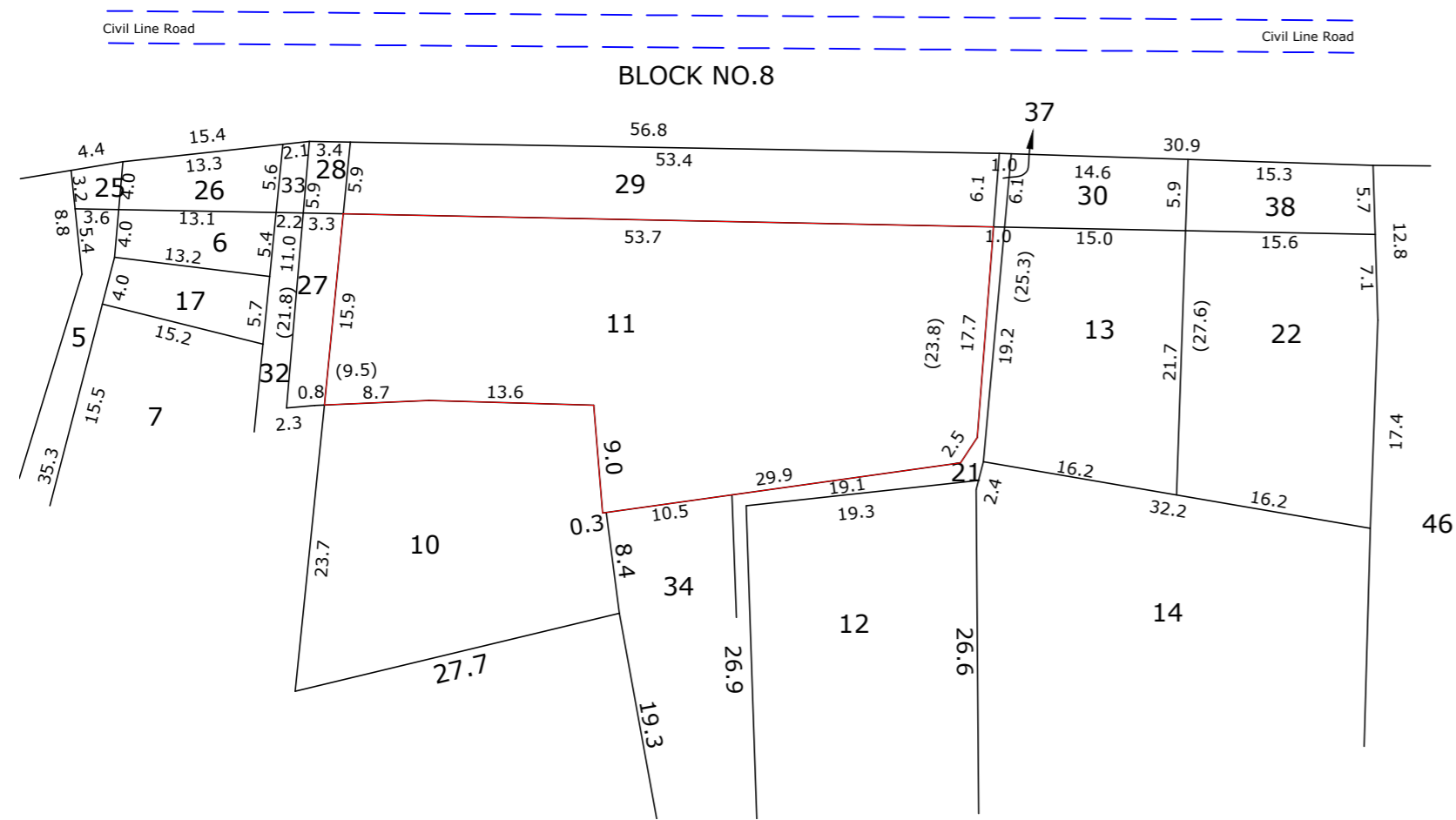
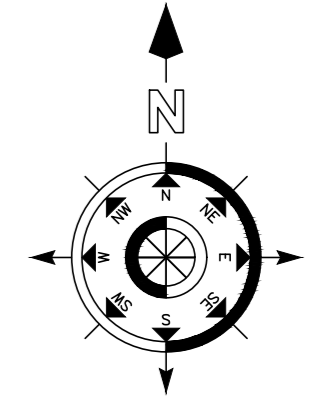
CHEMBUMUKKU STATION

TITLE : LAND PLAN SCHEDULE

DRG NO : KMRL-PH2-CV-LP-004

← TOWARDS JLN STADIUM

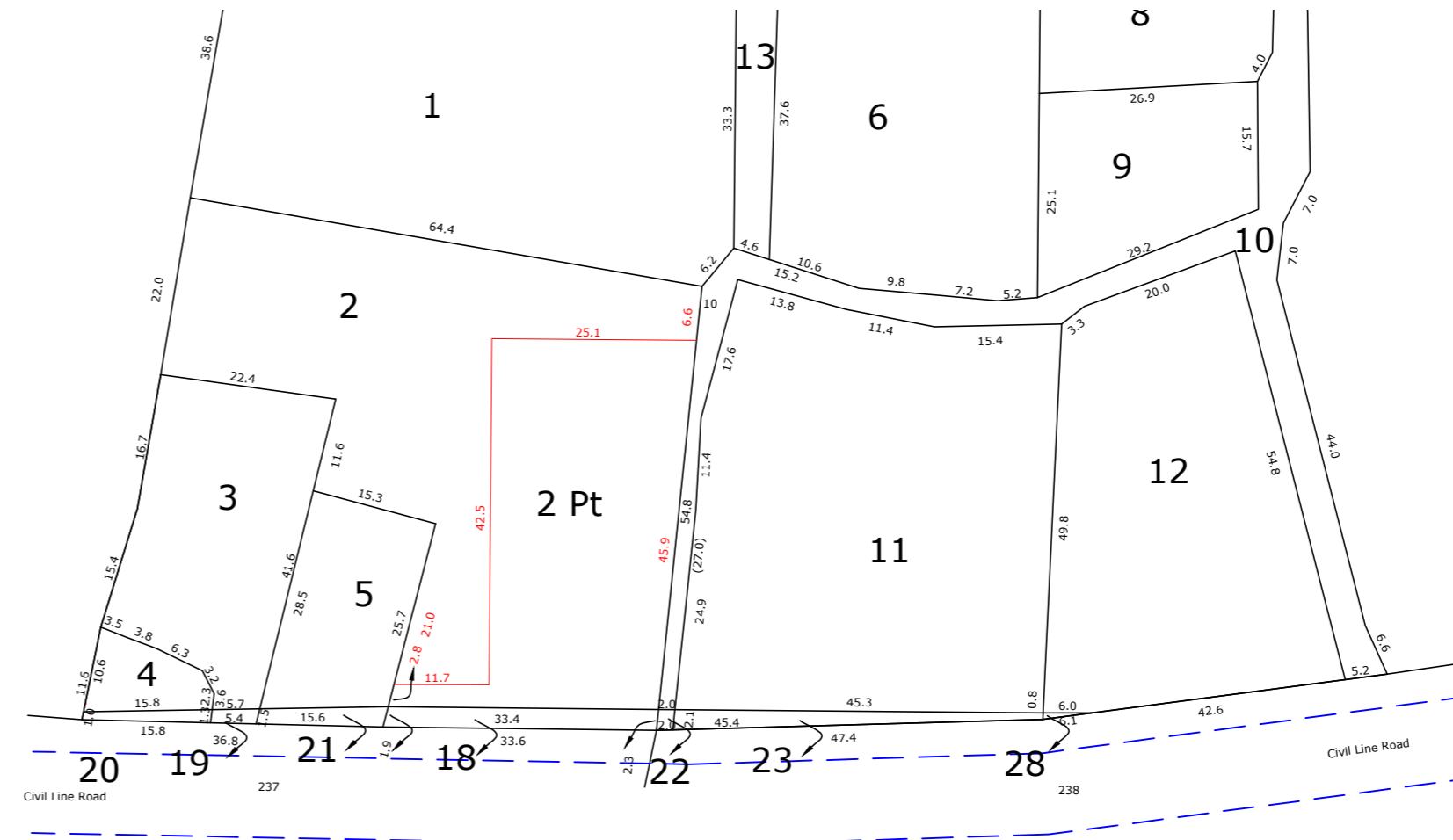
TOWARDS INFOPARK →



RHS LAND

Re Survey No.	Approx. Extent (in Ha)	Remarks
45/11	0.1049	L.A.

DISTRICT	: ERNAKULAM
TALUK	: KANAYANNUR
VILLAGE	: VAZHAKKALA
BLOCK NO.	: 9



LHS LAND

Re Survey No.	Approx. Extent (in Ha)	Remarks
239/2 Part	0.1080	L.A.

DISTRICT	: ERNAKULAM
TALUK	: KANAYANNUR
VILLAGE	: VAZHAKKALA
BLOCK NO.	: 8

Kochi Metro Rail Limited,
 (A joint venture company of Govt. of India & Govt. of Kerala)

 KMRL, 4th Floor,
 JLN Stadium Metro Station, Kaloor,
 Ernakulam. Pin: 682 017
 Phone : 0484-282 6700
 Fax : 0484-238 0686
 Email- contactus@kmrl.co.in



KOCHI METRO RAIL PROJECT

PHASE II | JLN STADIUM - INFOPARK

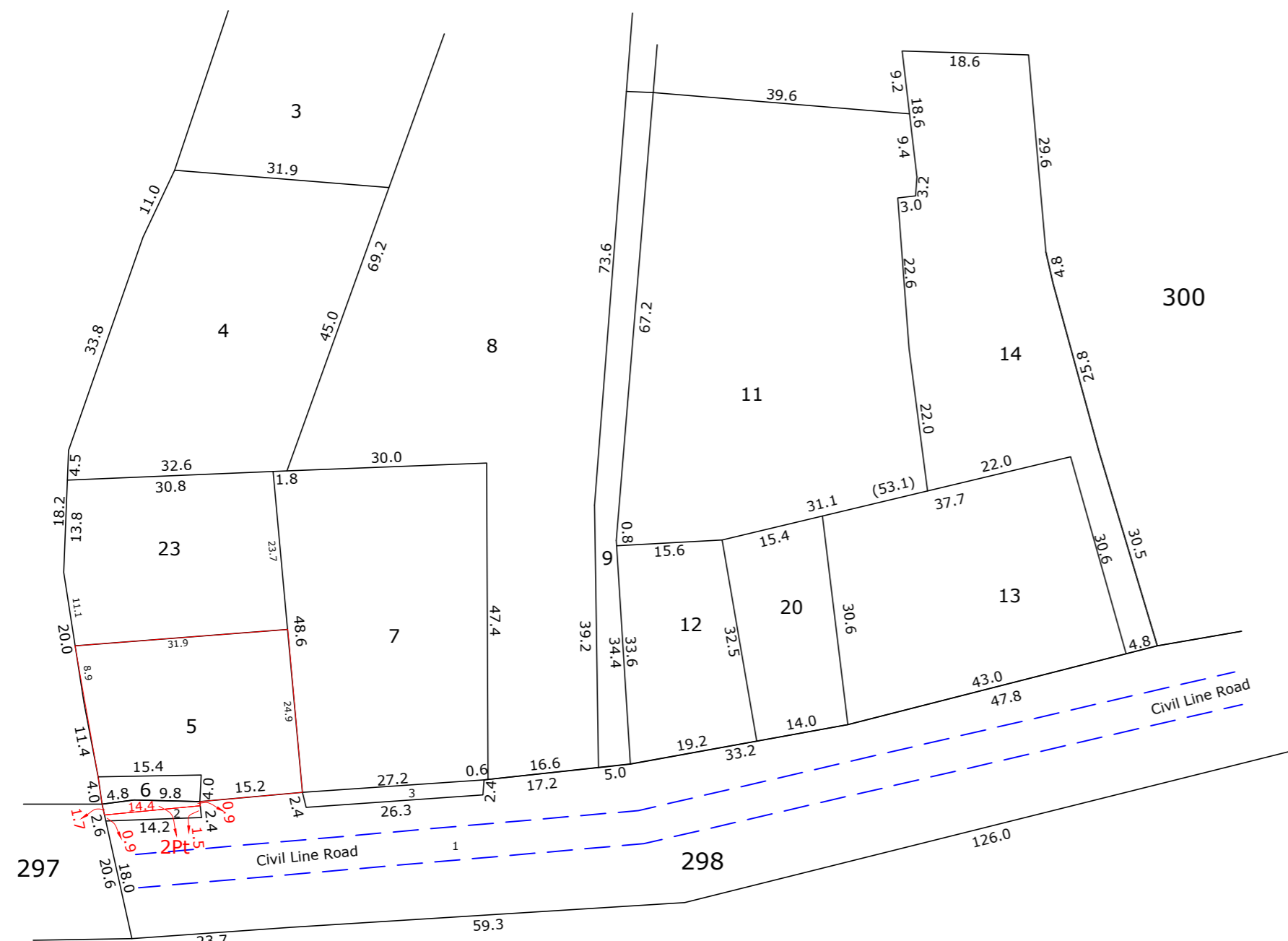
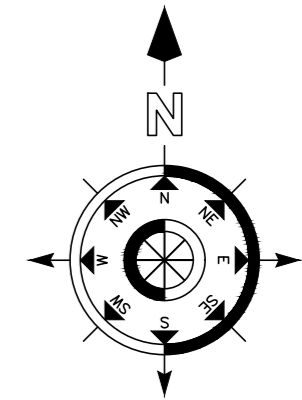
VAZHAKKALA STATION

TITLE : LAND PLAN SCHEDULE

DRG NO : KMRL-PH2-CV-LP-005

← TOWARDS JLN STADIUM

TOWARDS INFOPARK →

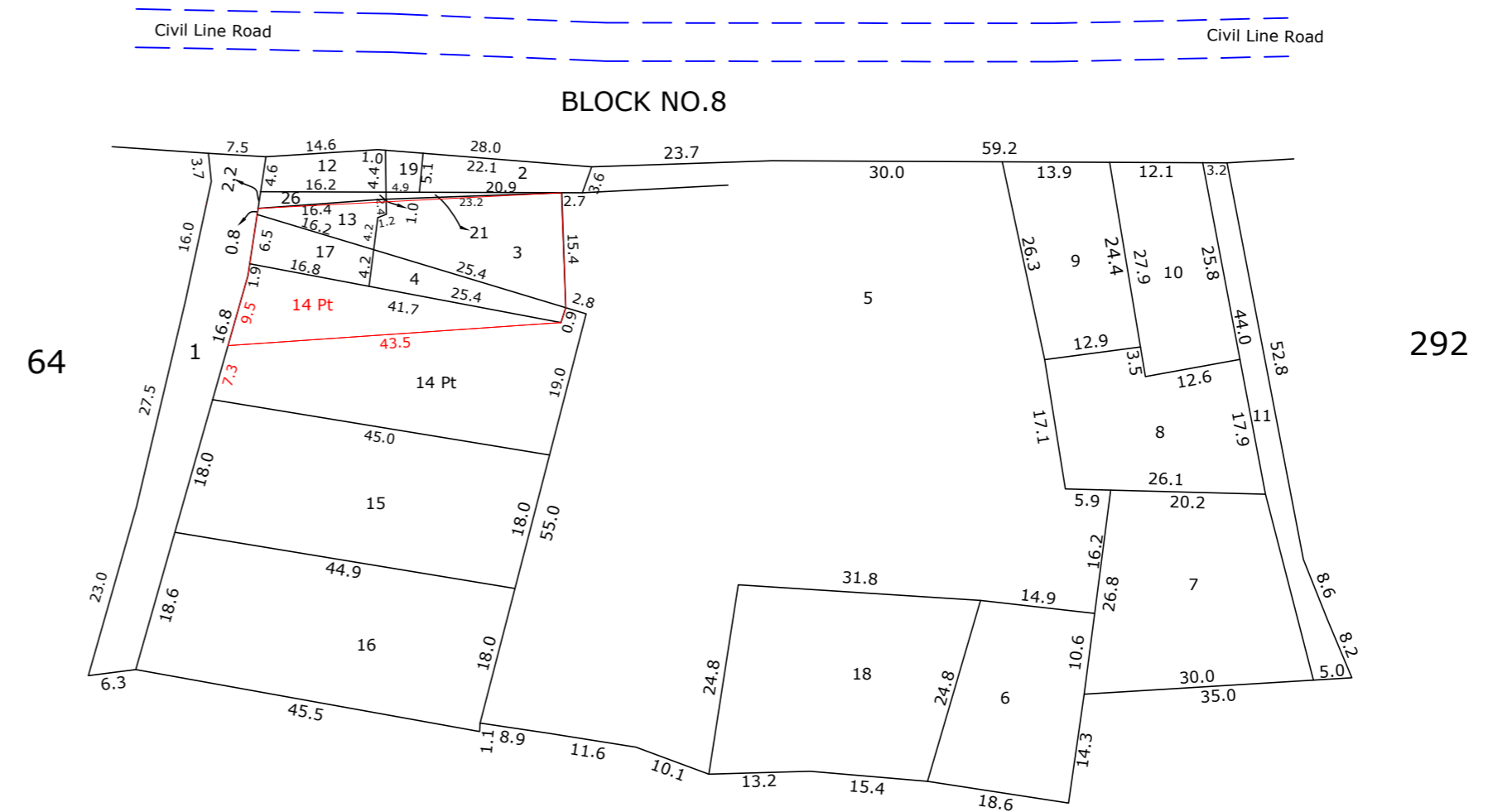


BLOCK NO.9

LHS LAND

Re Survey No.	Approx.Extent (in Ha)	Remarks
298/2 Part	0.0015	L.A.
299/5	0.0725	L.A.
299/6	0.0060	L.A.
TOTAL	0.0800	

DISTRICT	: ERNAKULAM
TALUK	: KANAYANNUR
VILLAGE	: VAZHAKKALA
BLOCK NO. :	8



BLOCK NO.8

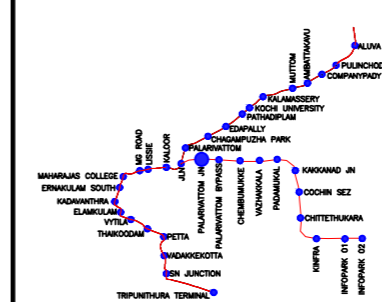
RHS LAND

Re Survey No.	Approx.Extent (in Ha)	Remarks
291/3	0.0288	L.A.
291/4	0.0050	L.A.
291/13	0.0064	L.A.
291/14 Part	0.0235	L.A.
291/17	0.0085	L.A.
TOTAL	0.0722	

DISTRICT	: ERNAKULAM
TALUK	: KANAYANNUR
VILLAGE	: VAZHAKKALA
BLOCK NO. :	9

Kochi Metro Rail Limited,
 (A joint venture company of Govt. of India & Govt. of Kerala)

 KMRL, 4th Floor,
 JLN Stadium Metro Station, Kaloor,
 Ernakulam. Pin: 682 017
 Phone : 0484-282 6700
 Fax : 0484-238 0686
 Email- contactus@kmrl.co.in



KOCHI METRO RAIL PROJECT

PHASE II | JLN STADIUM - INFOPARK

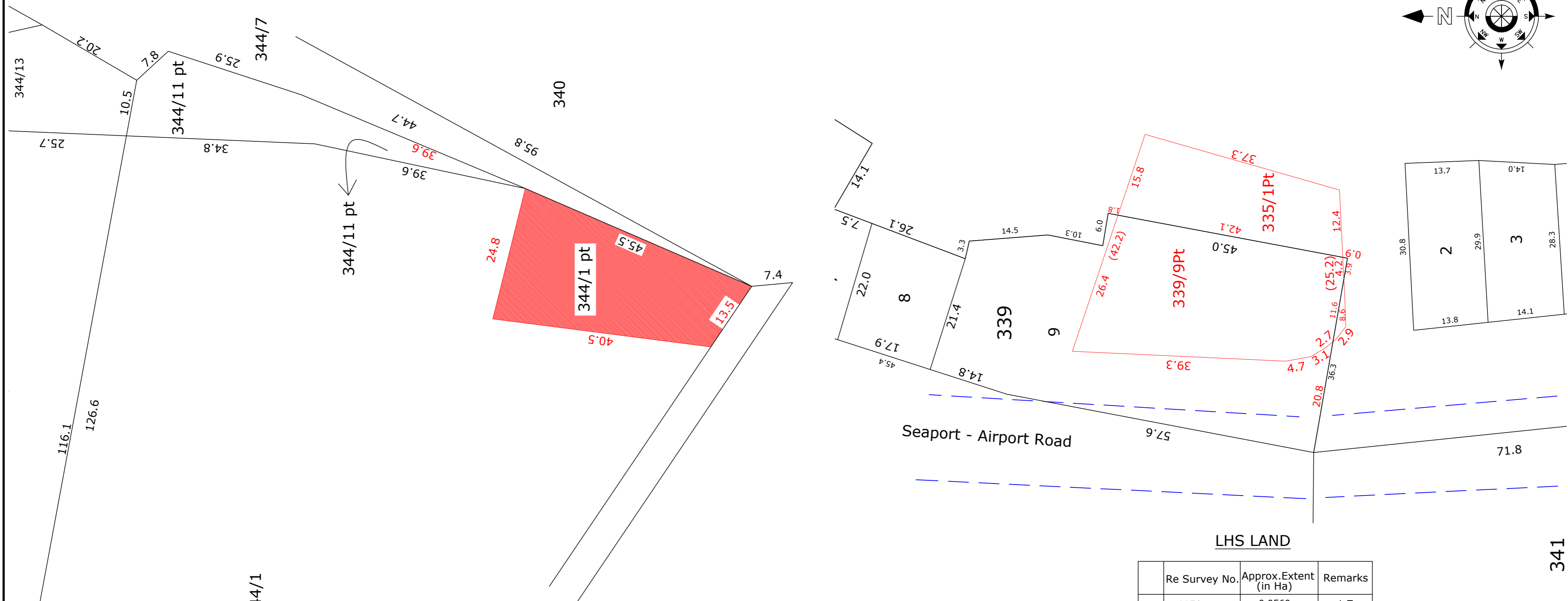
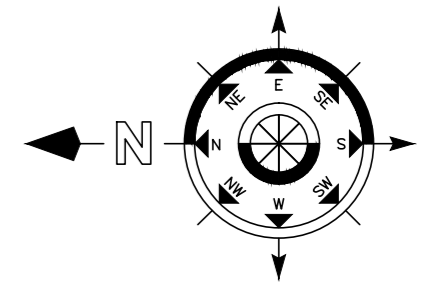
PADAMUGHAL STATION

TITLE : LAND PLAN SCHEDULE

DRG NO : KMRL-PH2-CV-LP-006

← TOWARDS JLN STADIUM

TOWARDS INFOPARK →



RHS LAND

Block No.	Re Survey No.	Extent (in Ares)	Remarks
9	344/1 Part	8.30 (Approx)	Land of Children's Home (Girls) Proposed Kakkanad Metro Station (RHS)

LHS LAND

Re Survey No.	Approx. Extent (in Ha)	Remarks
335/1 Part	0.0560	L.T.
339/9 Part	0.1015	L.T.
TOTAL	0.1575	

DISTRICT : ERNAKULAM
 TALUK : KANAYANNUR
 VILLAGE : KAKKANADU
 BLOCK NO. : 9

Kochi Metro Rail Limited,
 (A joint venture company of Govt. of India & Govt. of Kerala)
 KMRL, 4th Floor,
 JLN Stadium Metro Station, Kaloor,
 Ernakulam. Pin: 682 017
 Phone : 0484-282 6700
 Fax : 0484-238 0686
 Email- contactus@kmrl.co.in



KOCHI METRO RAIL PROJECT

PHASE II | JLN STADIUM - INFOPARK

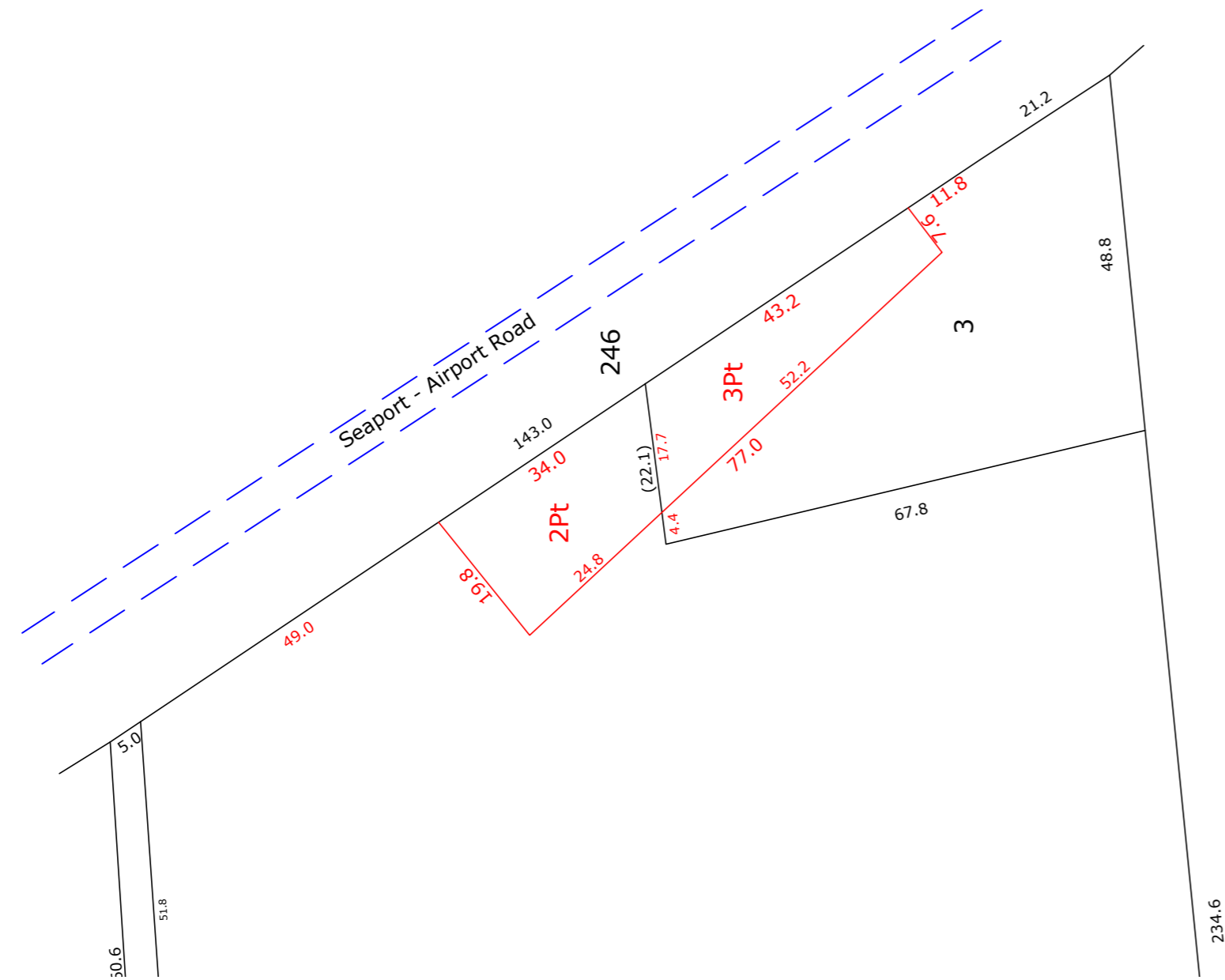
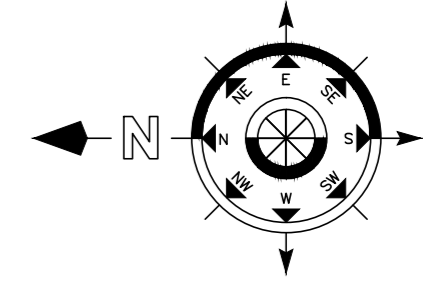
KAKKANAD STATION

TITLE : LAND PLAN SCHEDULE

DRG NO : KMRL-PH2-CV-LP-007

← TOWARDS JLN STADIUM

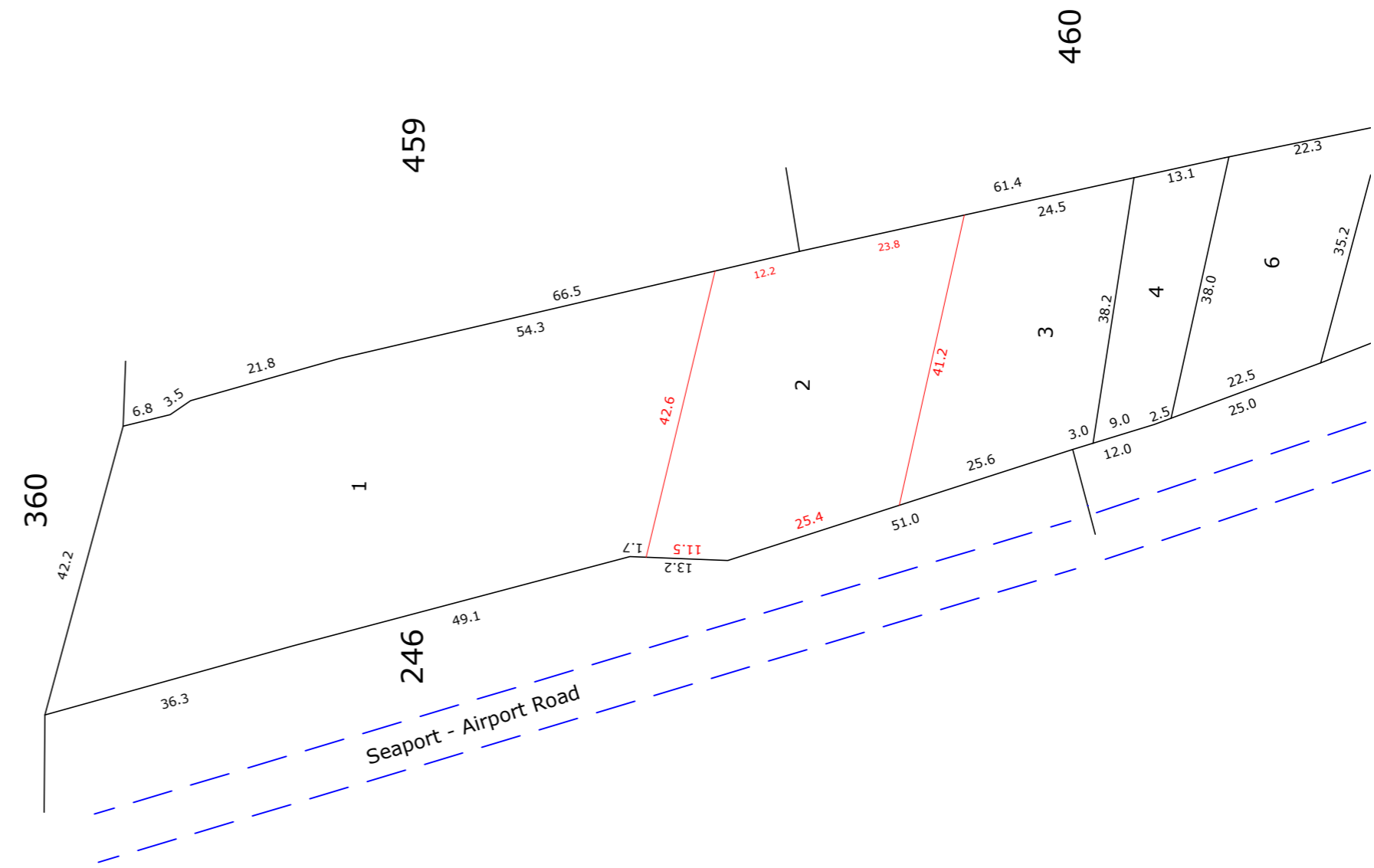
TOWARDS INFOPARK →



RHS LAND

Re Survey No.	Approx. Extent (in Ha)	Remarks
247/2 Part	0.0515	L.T.
247/3 Part	0.0545	L.T.
TOTAL	0.1060	

DISTRICT : ERNAKULAM
 TALUK : KANAYANNUR
 VILLAGE : KAKKANADU
 BLOCK NO. : 9



LHS LAND

Re Survey No.	Approx. Extent (in Ha)	Remarks
245/2	0.1440	L.A.

Kochi Metro Rail Limited,
 (A joint venture company of Govt. of India & Govt. of Kerala)
 KMRL, 4th Floor,
 JLN Stadium Metro Station, Kaloor,
 Ernakulam. Pin: 682 017
 Phone : 0484-282 6700
 Fax : 0484-238 0686
 Email- contactus@kmrl.co.in



KOCHI METRO RAIL PROJECT

PHASE II | JLN STADIUM - INFOPARK

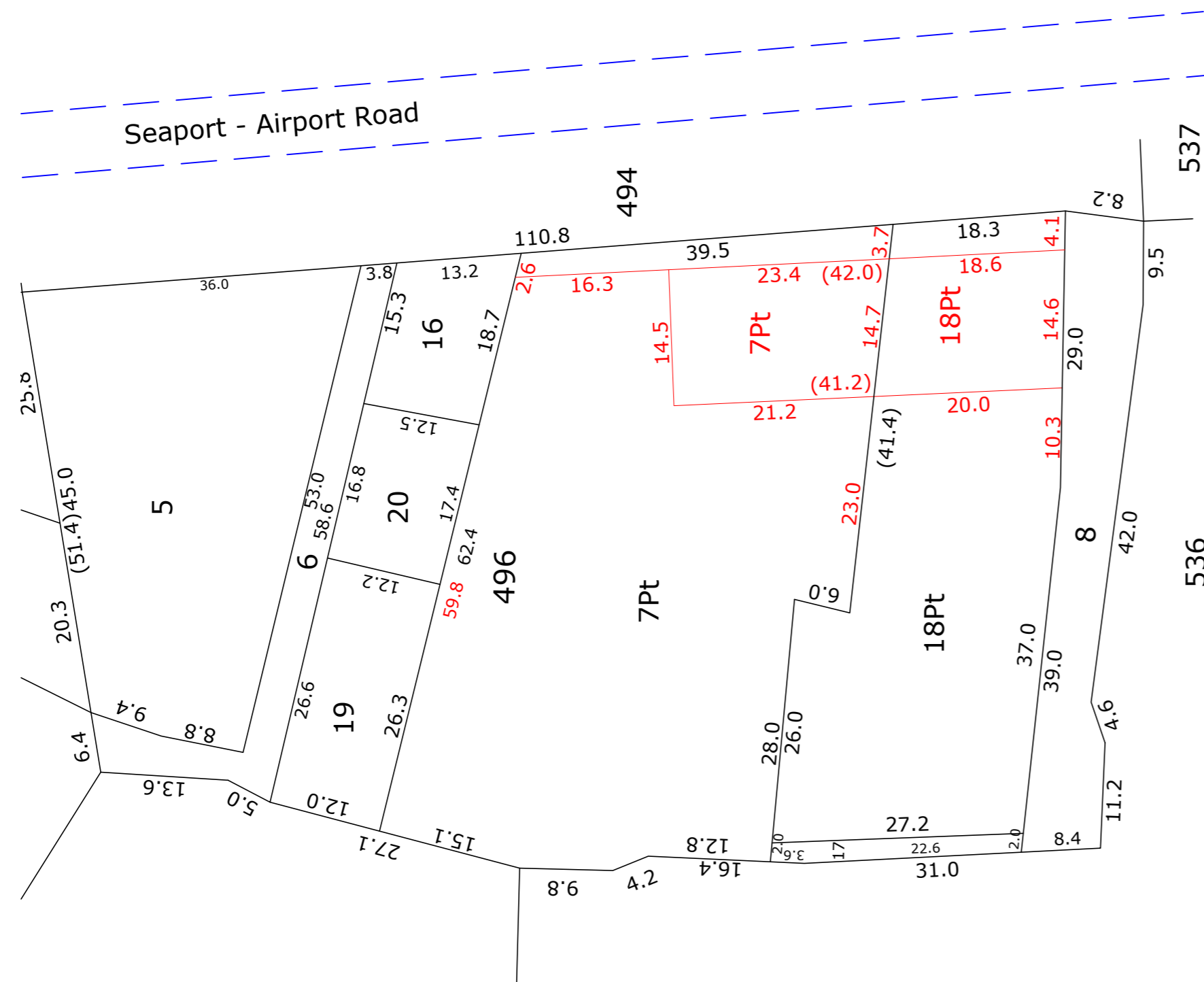
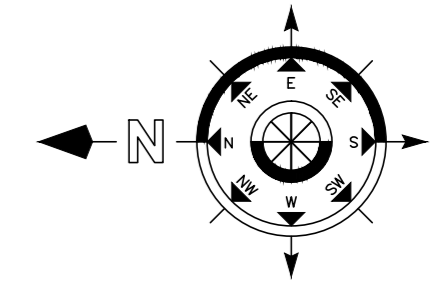
COCHIN SEZ STATION

TITLE : LAND PLAN SCHEDULE

DRG NO : KMRL-PH2-CV-LP-008

TOWARDS JLN STADIUM

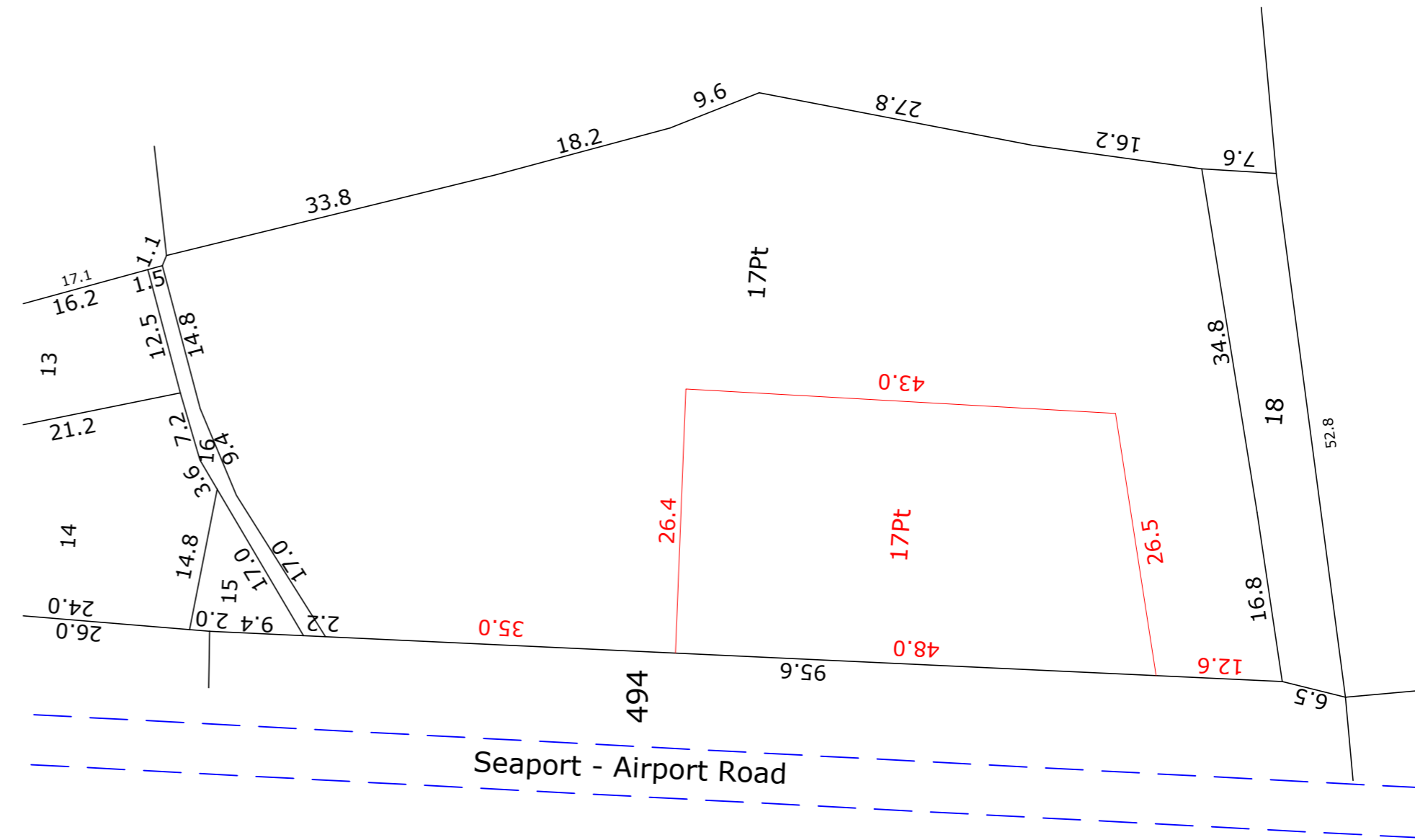
TOWARDS INFOPARK



RHS LAND

Re Survey No.	Approx.Extent (in Ha)	Remarks
496/7 Part	0.0325	L.A.
496/18 Part	0.0285	L.A.
TOTAL	0.0610	

DISTRICT	: ERNAKULAM
TALUK	: KANAYANNUR
VILLAGE	: KAKKANADU
BLOCK NO.	: 9



LHS LAND

Re Survey No.	Approx.Extent (in Ha)	Remarks
493/17 Part	0.1200	L.A.

Kochi Metro Rail Limited,
 (A joint venture company of Govt. of India & Govt. of Kerala)

 KMRL, 4th Floor,
 JLN Stadium Metro Station, Kaloor,
 Ernakulam. Pin: 682 017
 Phone : 0484-282 6700
 Fax : 0484-238 0686
 Email- contactus@kmrl.co.in



KOCHI METRO RAIL PROJECT

PHASE II | JLN STADIUM - INFOPARK

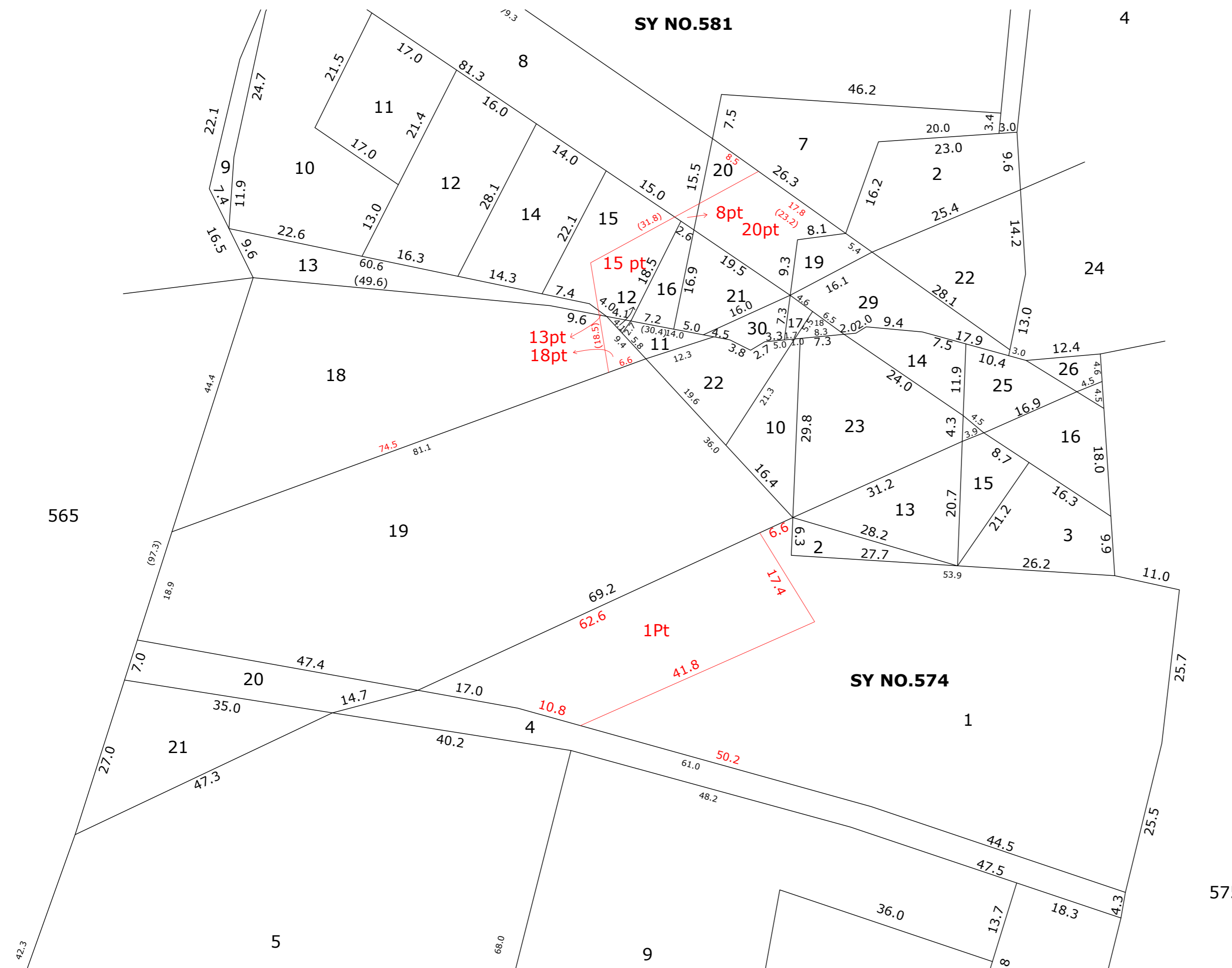
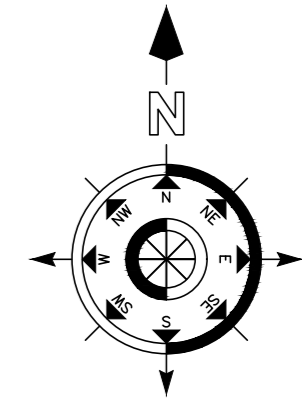
CHITTETHUKARA

TITLE : LAND PLAN SCHEDULE

DRG NO : KMRL-PH2-CV-LP-009

TOWARDS JLN STADIUM ←

TOWARDS INFOPARK →



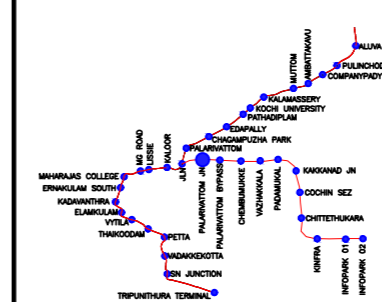
DISTRICT	: ERNAKULAM
TALUK	: KANAYANNUR
VILLAGE	: KAKKANADU
BLOCK NO.	: 9

R.H.S		
Re Survey No.	Approx.Extent (in Ha)	Remarks
574/1 Part	0.0910	L.A.

L.H.S		
Re Survey No.	Approx.Extent (in Ha)	Remarks
574/11	0.0270	L.A.
574/12	0.0005	L.A.
574/18 part	0.0040	L.A.
581/8 part	0.0010	L.A.
581/13 part	0.0002	L.A.
581/15 part	0.0130	L.A.
581/16	0.0080	L.A.
581/19	0.0080	L.A.
581/20 Part	0.0250	L.A.
581/21	0.0219	L.A.
Total	0.1086	

Kochi Metro Rail Limited,
 (A joint venture company of Govt. of India & Govt. of Kerala)

 KMRL, 4th Floor,
 JLN Stadium Metro Station, Kaloor,
 Ernakulam. Pin: 682 017
 Phone : 0484-282 6700
 Fax : 0484-238 0686
 Email- contactus@kmrl.co.in



KOCHI METRO RAIL PROJECT

PHASE II | JLN STADIUM - INFOPARK

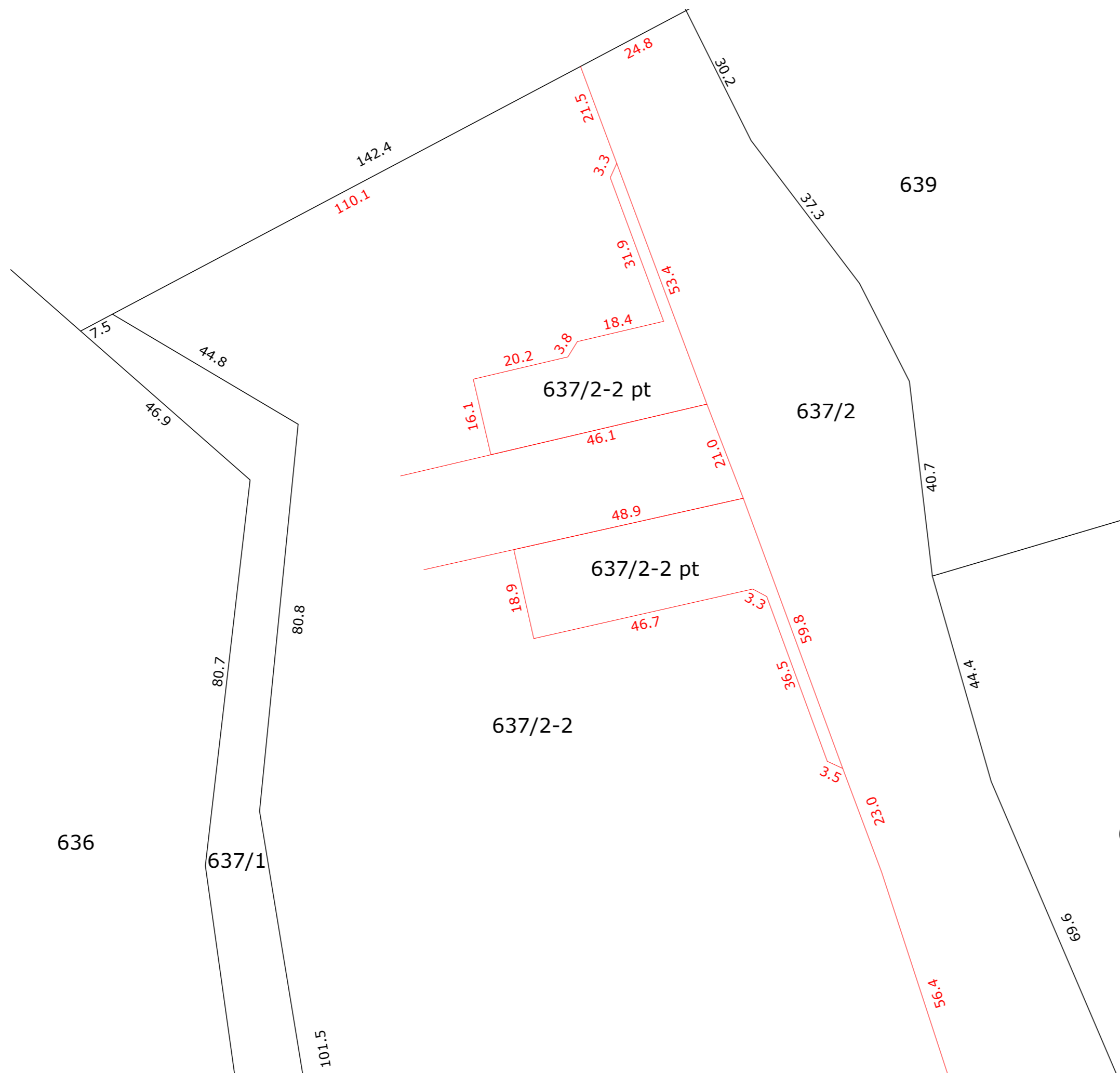
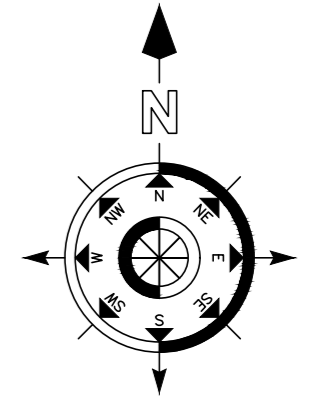
KINFRA STATION

TITLE : LAND PLAN SCHEDULE

DRG NO : KMRL-PH2-CV-LP-010

← TOWARDS JLN STADIUM

TOWARDS INFOPARK →



DISTRICT	: ERNAKULAM
TALUK	: KANAYANNUR
VILLAGE	: KAKKANADU
BLOCK NO.	: 9

R.H.S		
Re Survey No.	Approx.Extent (in Ha)	Remarks
637/2-2 Part	0.1060	L.A.

L.H.S		
Re Survey No.	Approx.Extent (in Ha)	Remarks
637/2-2 Part	0.0870	L.A.

Kochi Metro Rail Limited,
 (A joint venture company of Govt. of India & Govt. of Kerala)

 KMRL, 4th Floor,
 JLN Stadium Metro Station, Kaloor,
 Ernakulam. Pin: 682 017
 Phone : 0484-282 6700
 Fax : 0484-238 0686
 Email- contactus@kmrl.co.in



KOCHI METRO RAIL PROJECT

PHASE II | JLN STADIUM - INFOPARK

INFOPARK STATION

TITLE : LAND PLAN SCHEDULE

DRG NO : KMRL-PH2-CV-LP-011